

How the Tests are Done

First the technician will prepare your skin to be clean, dry, and free of any lotions or oils so sensory pads can be placed on your head or under your eyelids.

After positioning the sensory pads, the technician starts the test. You will be asked to cover one eye at a time to record each eye's response independently. Once the test begins, you will see a series of black and white patterns that appear to "flip" quickly over and over again on a computer screen. It is simply a matter of looking at the pattern for the duration of the test. Make sure to follow the technician's instructions.

Here are a few patterns you should expect:



Preparing for Your Test

It is best for your hair and face to be clean, dry, and free of any gels, sprays or oils.

We recommend the Diopsys® NOVA Vision Test as part of your Vision Care Program



DIOPSYS
Seeing tomorrow, today.
www.diopsys.com

The Pathway to Visual Health

Your Guide to
Visual Evoked Potential (VEP) &
Pattern Electroretinography (ERG)
Vision Testing



Diopsys® NOVA Vision Testing System

The Diopsys® NOVA Vision Testing System is a painless, non-invasive vision test utilizing electrophysiology, called Visual Evoked Potential (VEP) and pattern Electroretinography (ERG).

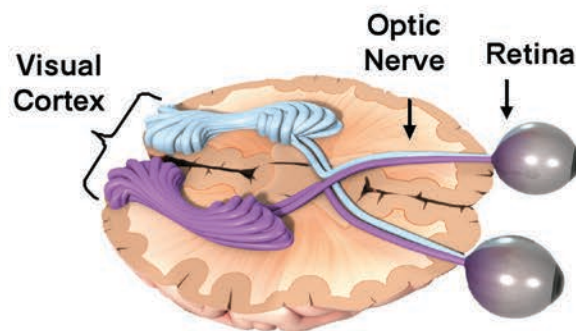
The purpose of these tests is to provide your doctor with comprehensive information on the function of your vision. The test results assist in better planning of your treatment (if needed) and monitoring your results.



Visual Evoked Potential (VEP)

Visual Evoked Potential (VEP) measures the electrical activity in the entire vision system. When light enters your eye, it is converted into electrical energy at the retina and travels through the optic nerve to the visual cortex of the brain which processes vision. The Diopsys® NOVA-VEP test measures the strength and speed of the signal from your retina all the way to your visual cortex.

The VEP technology in the Diopsys® NOVA device helps determine how your eyes communicate with your brain in a way that no other instrument or vision test can.



Pattern Electroretinography (ERG)

Pattern Electroretinography (ERG) measures the function of your retina - the light-sensitive layer at the back of your eye. When light enters the eye, it is converted into electrical energy by specialized cells in the retina. The Diopsys® NOVA-ERG test records how well the cells of the retina are conveying electrical impulses within the eye.

ERG results have been demonstrated to aid in the diagnosis and treatment planning of many vision disorders.

